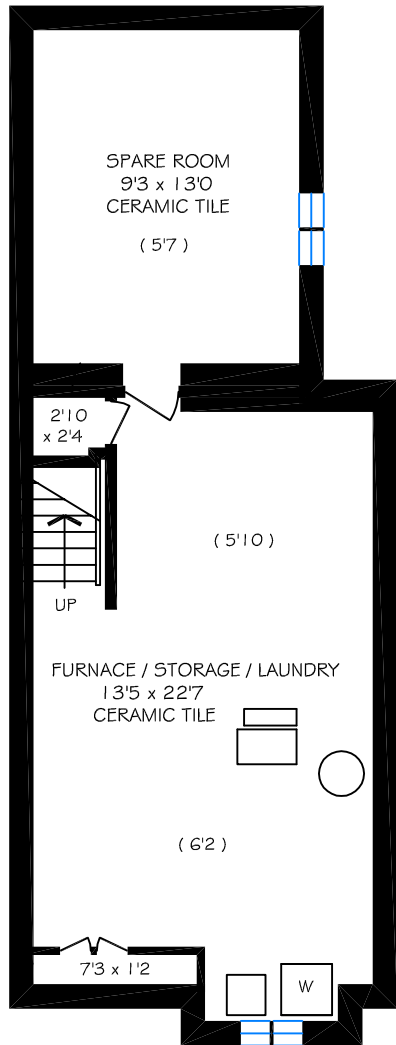
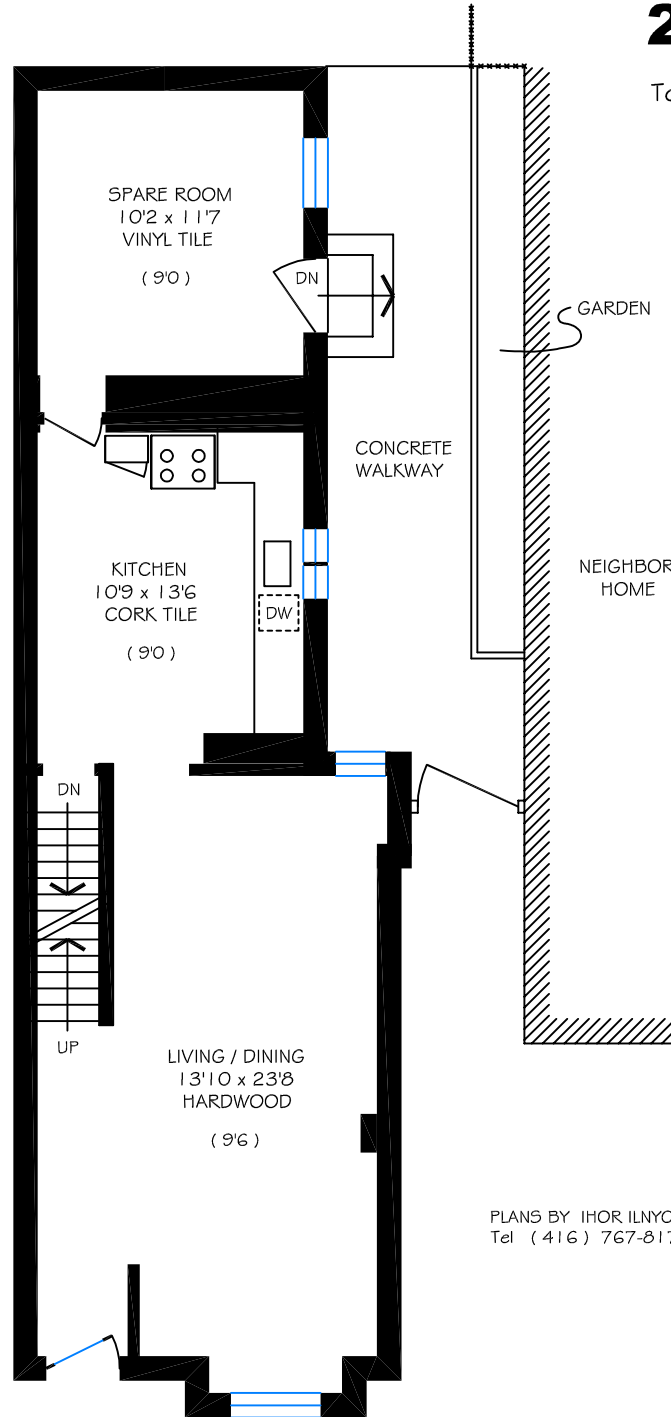


Gillian Alcorn, Sales Representative
 Royal LePage Real Estate Services
 Tel (416) 762-8255



BASEMENT FLOOR = 610 SQ FT



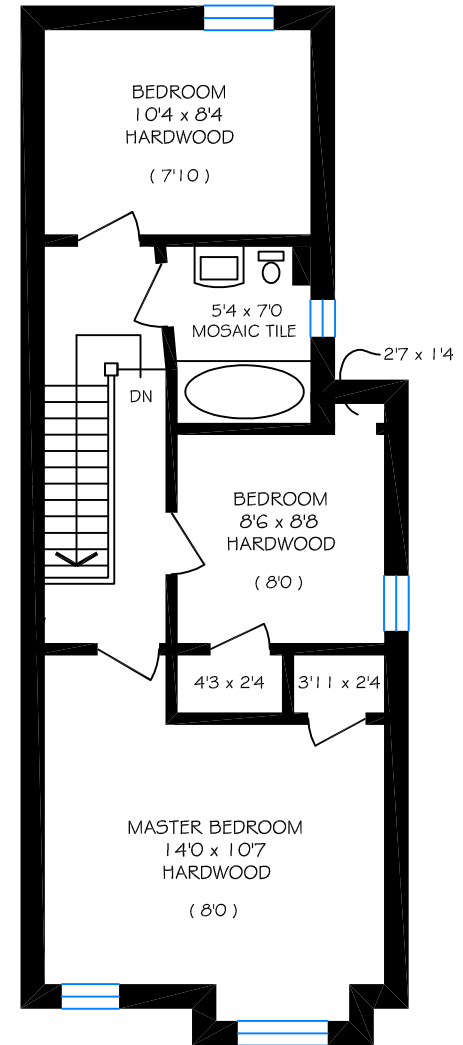
GROUND FLOOR = 780 SQ FT

256 Maria Street

Total above ground floor area is 1390 sq ft

No warranty is made or implied as to the accuracy of the information contained herein.

(9'6) refers to ceiling height



SECOND FLOOR = 610 SQ FT